

Mk7A

 **ATLAS** – Class 1 and Class 2

Single Phase Smart Meter with
Two-Element Feature

Built on the advanced Atlas metering platform, the Mk7A is a single phase 2-element meter which integrates both a 100A UC3 compliant relay and 40A UC2 compliant load control relay which allows disconnection and reconnection of electrical services remotely.



Key Features

AMI

AMI READY



DISCONNECT
RELAY



MEASURE
EVERYTHING



LARGE LCD
DISPLAY



ANTI TAMPER



MULTIPLE COMMS
OPTIONS



UPGRADEABLE

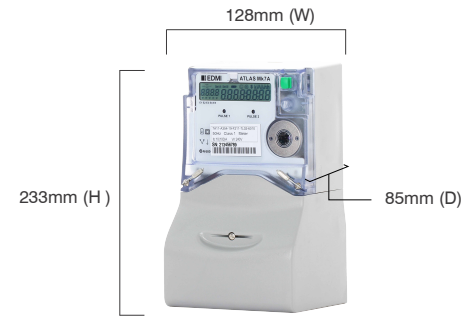


LARGE DATA
STORAGE

Mk7A

 **ATLAS** - Class 1 and Class 2

Single Phase Smart Meter with Two-Element Feature



 Weight: 1.8kg

Standards and Compliance

- Class 1 and Class 2
- IEC 62052-11, 62052-21,*62052-31, 62053-21, 62053-23
- AS 62052.11, 62052.21, 62053.21, 62053.23
- NMI M6

Measurement

- 1 phase 2 wire
- Option for neutral current measurement
- Twin element measurement and control (main 100A, load 40A)

Voltage

- Nominal voltage: 220V - 240V
- Operating range: 176V - 276V
- Withstand: Up to 290V
- Burden: IEC 62053-61 compliant

Current

- WC range: 5/100A, 10/100A
- WC limit: 7000A for 3 cycles
- Burden: <0.5VA/phase

Frequency

- 45Hz - 65Hz

Relay

- 100A Main IEC 62055-31 Annex C UC3
- Flexible relay and second element configuration options
- Relay fault detection
- Enhanced relay switching time ≤ 10 s
- 40A Load control 62055-31 Annex C UC2 and IEC 62052-21

Inputs/Outputs Configuration

- Up to 4 I/O total in 2 isolated groups (maximum 2/*1 relay output)
- Options include: Passive/Active inputs, S0/BOSFET/Relay outputs
- Passive input voltage: 5V, 12V, 48V, 110V, 240V
- Active input voltage: 12V (common ground)
- S0 output: 27V, 27mA maximum
- BOSFET output: 240V, 100mA maximum
- Relay output: 240V, 2A

- 2 Programmable LED indicators
- Programmable output pulse width: 1ms to 100ms

Battery

- Internal battery
- Backup time: 10 years without power (Lithium Battery)
- Option for external battery

Real-time Clock

- Accuracy (internal) within 15 seconds per month at 23°C

Data Memory

- 2 MB of non-volatile memory

Display

- Large 7 segment alphanumeric display with 10.7mm x 6.67mm digit size
- *Large 14 segment alphanumeric display with 10.5mm x 5.1mm digit size
- Up to 60 user-defined screens of any meter parameter
- Definable enunciators
- Display available even without main power

Measured Values

- 2 elements 4 quadrants
- Import/Export/Absolute Wh, varh and VAh
- Fundamental Wh
- Per quadrant Wh, varh and VAh
- Main, load and Total
- W, var, VA, Vrms, Irms
- Power factor, frequency, phasor angles
- Supports ripple control/AFLC

Power Quality Indication

- Total Harmonic Distortion (THD)
- Option for live waveform display
- Sag/Swell
 - 5 Cycle resolution
 - Records time/date/phase/duration average and worst excursion
 - Programmable trigger levels

Load Survey/Profile

- Over 5000 days storage (2 channels, 30-minute intervals)

- AMI Ready
- Supports Advanced Demand Management (ADM) with prioritised rules
- Up to 32 channels and 4 independent surveys
- Intervals programmable from 1 to 60 minutes
- Energy, instantaneous readings, pulsing inputs as channel sources
- Ability to store average/minimum/maximum values for interval duration

Time of Use

- Up to 8 rates plus unified rate
- Up to 32 separate import and export registers
- Daily, weekly, monthly, yearly and special days
- Up to 200 programmable special days
- Up to 61 previous billing periods plus billing totals
- Block or rolling maximum demand
- Time of maximum demand
- Energy, pulsing inputs

Calendar

- Supports Daylight Saving time
- Supports Gregorian or Persian calendars

Tamper Detection and Alarms

- Provision for sealing with conventional wire or plastic seals
- Bypassing current and reverse current detection
- Advanced tamper detection and logging
- Pre-programmed alarms for meter self check
- Alarms trigger LEDs, enunciators, relay outputs or communications event
- Alarms are stored in event logs
- Option for fixed-threshold magnetic tamper detection
- *Option for high-sensitivity 3D magnetic tamper detection with configurable threshold

Security

- Multi-level security (username and password including encrypted log-in)
- Up to 7 independent security levels
- Up to 6 individual users
- AES128 bit encryption

Communications

- Up to 3 independently working communication ports:
 - Optical port: FLAG (IEC 62056-21) or ANSI Type 2 (ANSI C12.18)
 - RS-232 with modem power supply (2G/3G/4G LTE supported)
- UDP/IP, GPRS/PPP capable
- Compatible with MV-90™

Protocol

- EDMI command line
- DLMS
- MODBUS

Software

- EDMI EziView software available for meter programming and reading (Windows® compatible)
- EDMI MultiDrive software available for large scale AMI and AMR solutions (Windows® compatible)
- Supported by many popular third-party multi-vendor AMR systems
- Supports Function Based Setup

Environmental

- Specified operating range:
 - 25°C to +60°C
- Operating range limit:
 - 40°C to +70°C
- Storage range limit:
 - 40°C to +80°C
- Relative humidity:
 - Up to 75% mean, 95% non-condensing for 30 days
- Ingress protection: IP54
- Protective Class II
- Surge Test: 5kV
- Impulse Test: 10kV

Specifications with * symbol available in manufacturing codes with prefix 7Ax3

EDMI Limited (Headquarters)

47 Yishun Industrial Park A, Singapore 768724

Tel: +65 6756 2938 Fax: +65 6756 0125

Email: marketing@edmi-meters.com

techsupport@edmi-meters.com

www.edmi-meters.com

